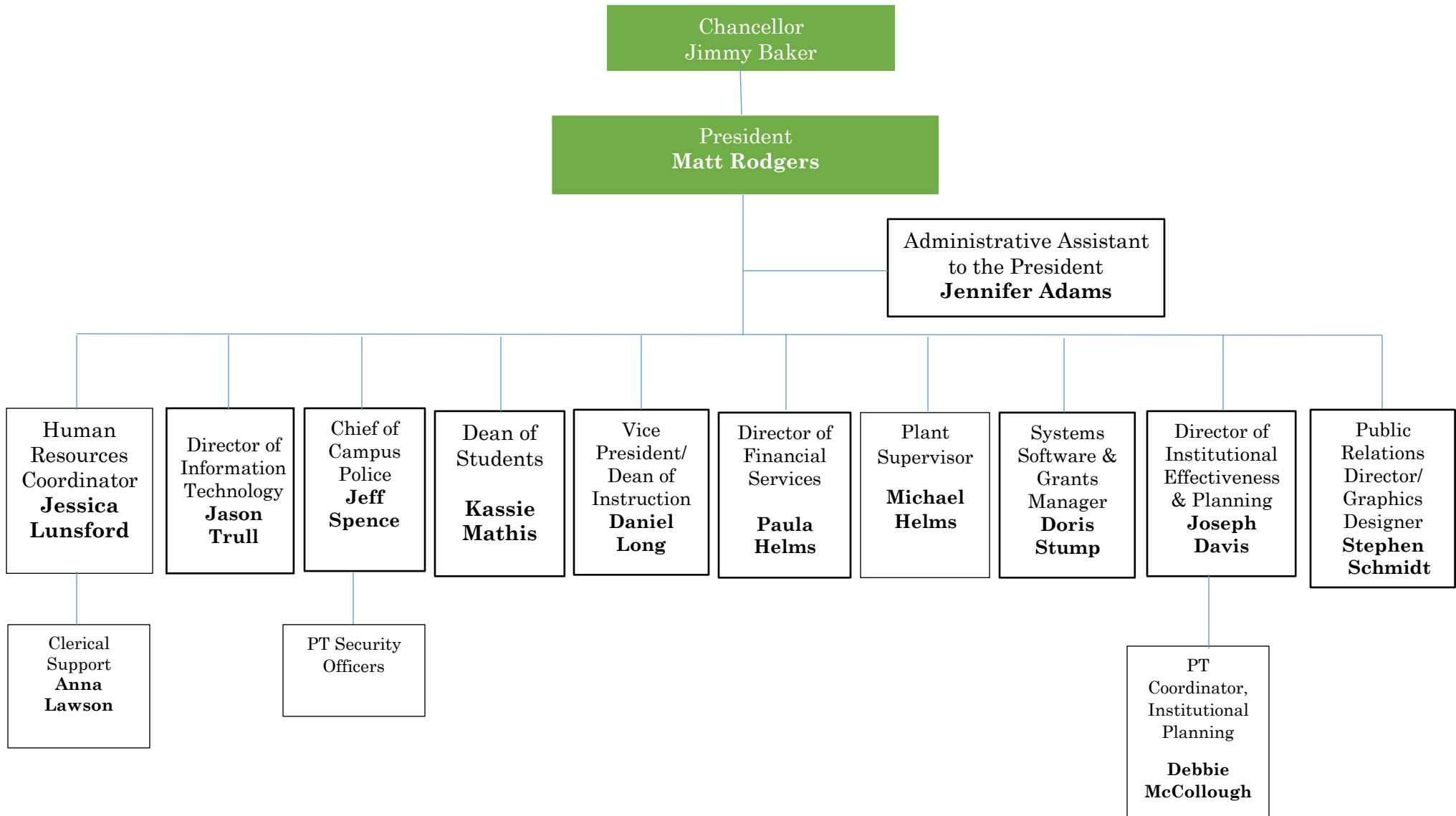


# Enterprise State Community College Organizational Chart 2021

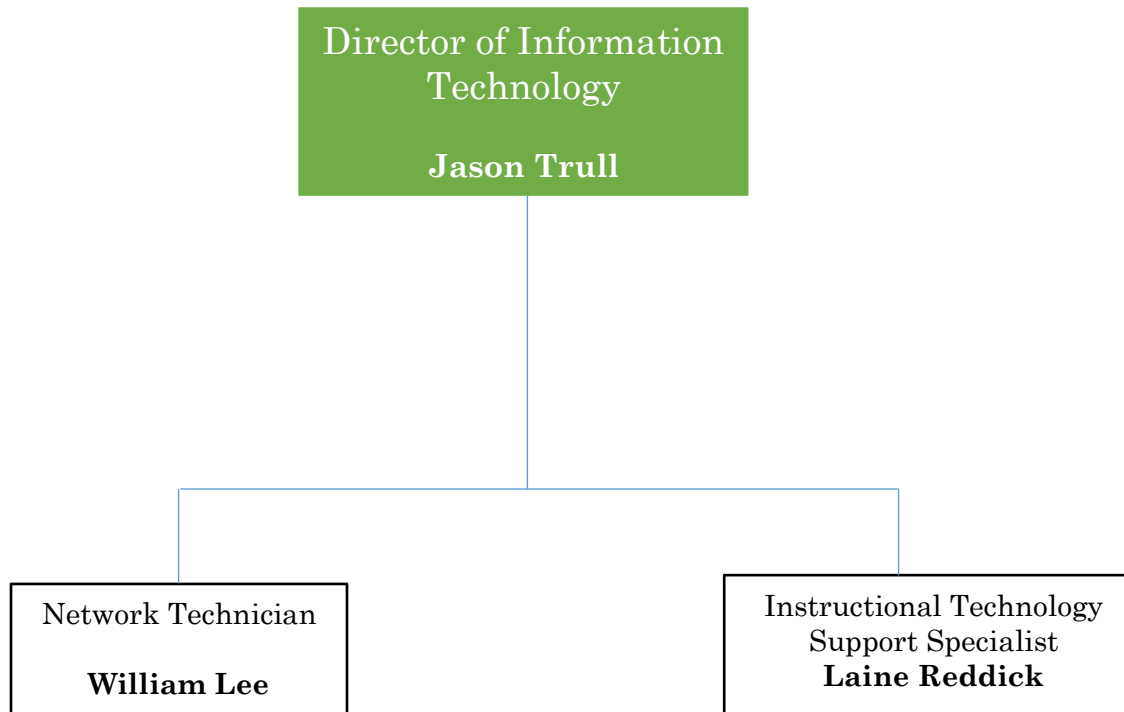
1. Organizational Chart Preview
2. Administration
3. Information Technology
4. Student Services
5. Instruction
6. Avionics/AMT- Ozark
7. English Division
8. BUS/CIS Division
10. Fine Arts Division
11. History/Social Science Division
12. Math Division
13. Health/Science Division
14. Fiscal and Administration Services
15. Facilities

# Enterprise State Community College ADMINISTRATION



# Enterprise State Community College

## INFORMATION TECHNOLOGY



# Enterprise State Community College

## STUDENT SERVICES

**Dean of Students**  
**Kassie Mathis**

Admin.Asst. to Dean of Students  
**(vacant)**

**Director**  
**Student**  
**Support**  
**Services**  
**Michael**  
**Harrison**

**Director**  
**Educational**  
**Opportunity**  
**Centers**  
**Jennifer**  
**Braden**

**Director**  
**Educational**  
**Talent**  
**Search**  
**Tiffany**  
**Snell**

**Athletic**  
**Director/**  
**Basketball**  
**Coach**  
**Jermaine**  
**Williams**

**Director of**  
**Financial**  
**Aid**  
**Laticia**  
**Dubose**

**Director of**  
**Recruiting**  
**Emily**  
**Baker**

**Registrar**  
**Jennifer**  
**Olsen**

**Director of**  
**Counseling**  
**& Student**  
**Success**  
**Dava**  
**Foster**

**SSS Program**  
**Coordinator**  
**(vacant)**

**SSS**  
**Career/Transfer**  
**Coordinator**  
**Kirra**  
**Merriweather**

**SSS Secretary**  
**Bridgett Tyler**

**SSS Career**  
**Transfer/Academic**  
**Advisor Ozark**  
**Lesia**  
**Grice**

**PT SSS**  
**Secretary**  
**Ozark**  
**Keisha Smith**

**EOC**  
**Educational**  
**Advisor**  
**(vacant)**

**EOC**  
**Records**  
**Manager/**  
**Educational**  
**Advisor**  
**Kristle**  
**Cline**

**ETS**  
**Program**  
**Assistant**  
**PT**  
**(vacant)**

**ETS**  
**Academic**  
**Advisor**  
**(vacant)**

**Baseball Coach/**  
**Sports Info.**  
**Director**  
**Samuel**  
**Frichter**

**Softball Coach/**  
**Weevil Fitness**  
**Center Director**  
**Clair Goodson**

**Volleyball Coach/**  
**Asst. Athletic Dir.**  
**Vanessa Howell**

**Golf Coach (PT)**  
**Scott Stephens**

**Cross Country**  
**Coach (PT)**  
**Chris Christian**

**Institutional**  
**Support**  
**Specialist**  
**Leslie**  
**Crittenden**

**Assistant FA**  
**Director**  
**Heather**  
**Walker**

**Student FA &**  
**VA**  
**Coordinator**  
**Stephen**  
**Adcock**

**Financial Aid**  
**Specialist**  
**(vacant)**

**Recruiter**  
**(vacant)**

**Recruiter**  
**Cassie**  
**Gibbs**

**Records**  
**Retention**  
**Specialist**  
**Janet**  
**Daniels**

**Enrollment**  
**Specialist**  
**Alex Davis**

**Admissions**  
**Specialist**  
**Valeria**  
**Pryor**

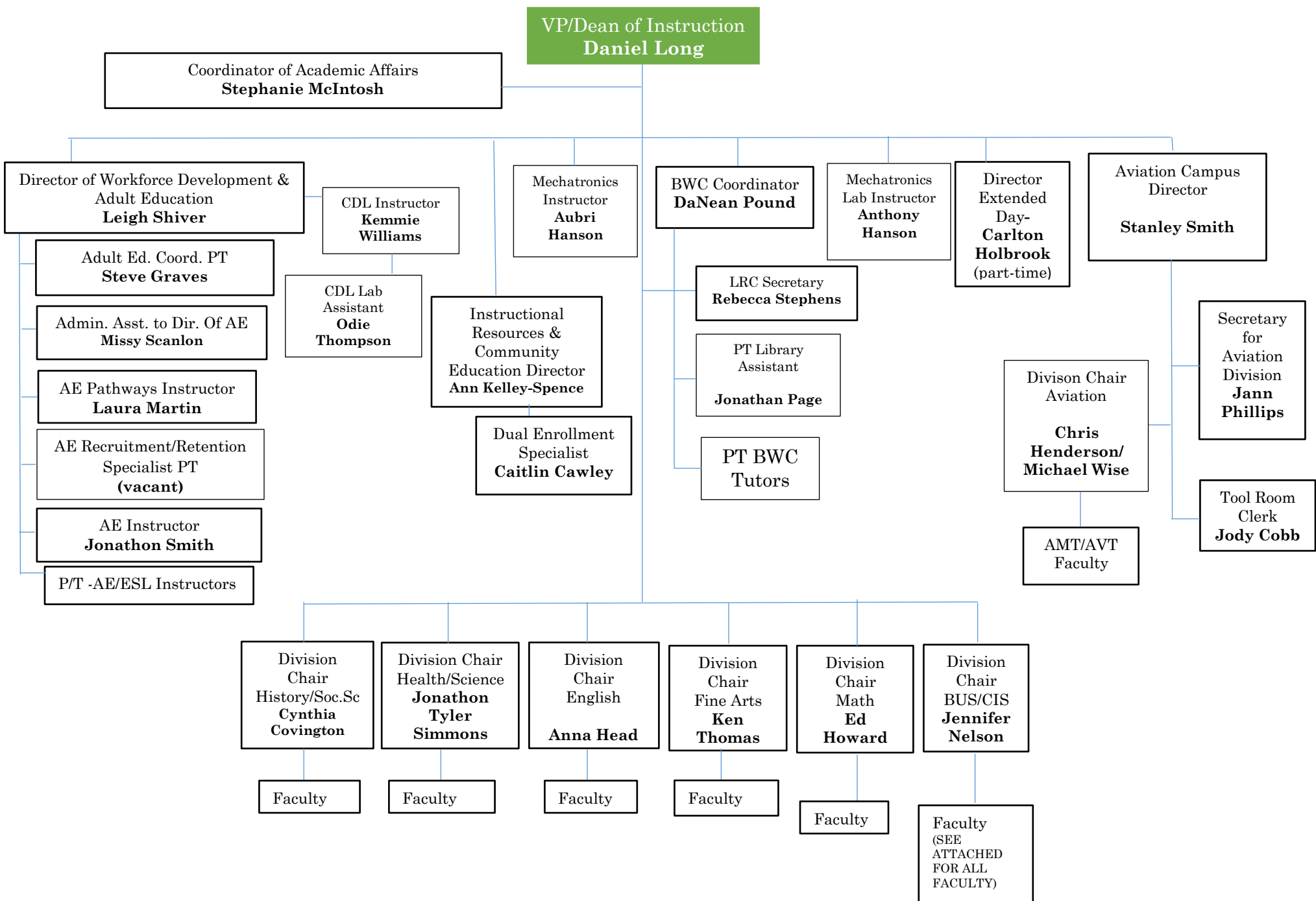
**SAS Lab**  
**Assistant**  
**Casandra Ware**

**Success Coach**  
**Natalie**  
**Bradley**

**Success Coach**  
**Micaela**  
**Knight**

# Enterprise State Community College

## INSTRUCTION

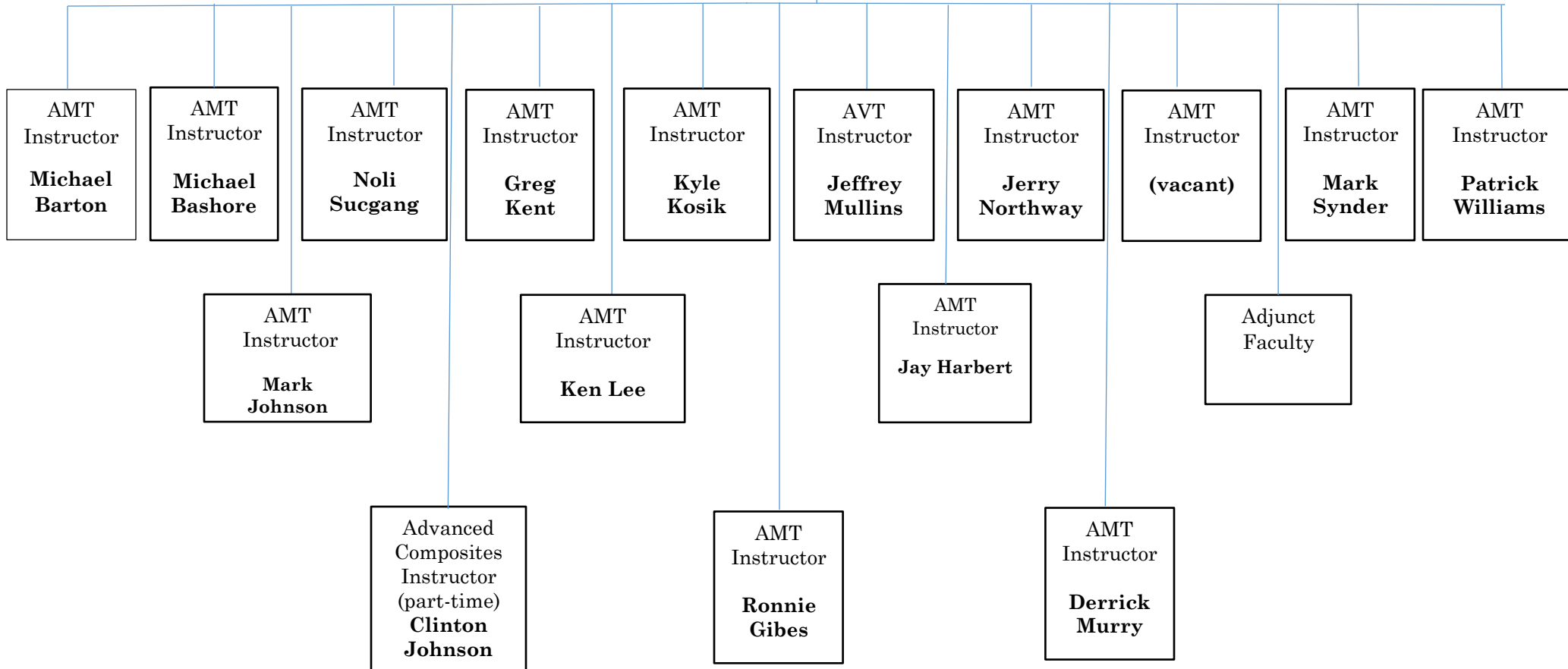


# Enterprise State Community College

## AVIONICS/AMT- OZARK

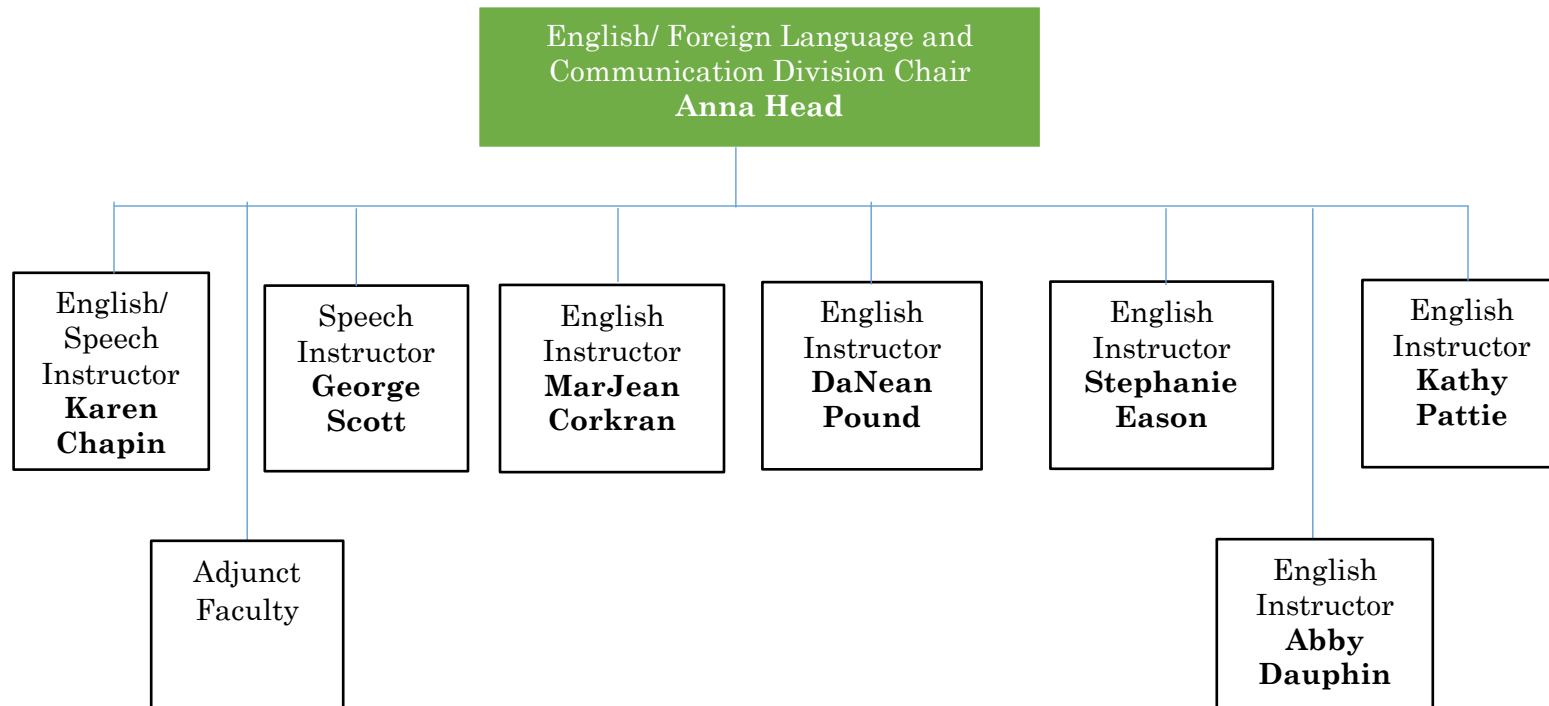
Aviation Division Director- **Stan Smith**

Aviation Division Chairs/Instructors  
Chris Henderson/ Michael Wise



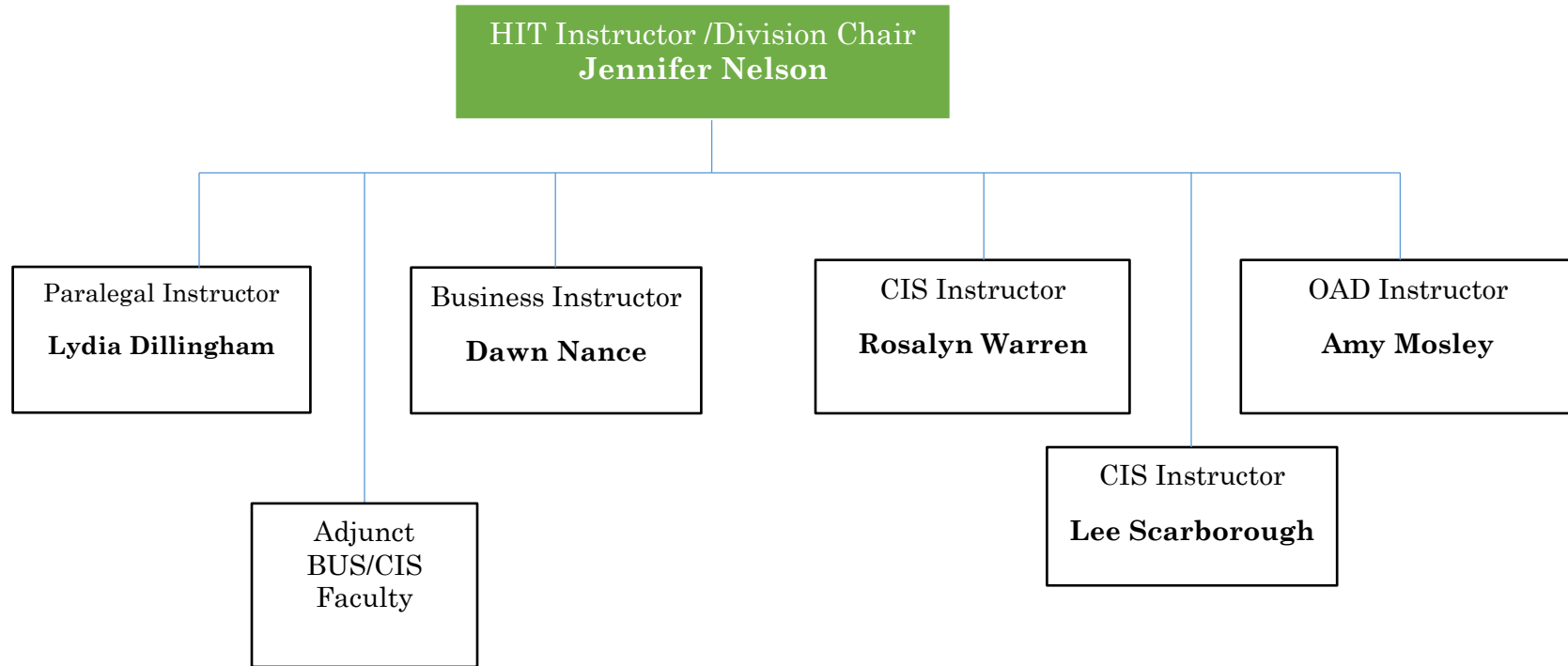
# Enterprise State Community College

## ENGLISH DIVISION



# Enterprise State Community College

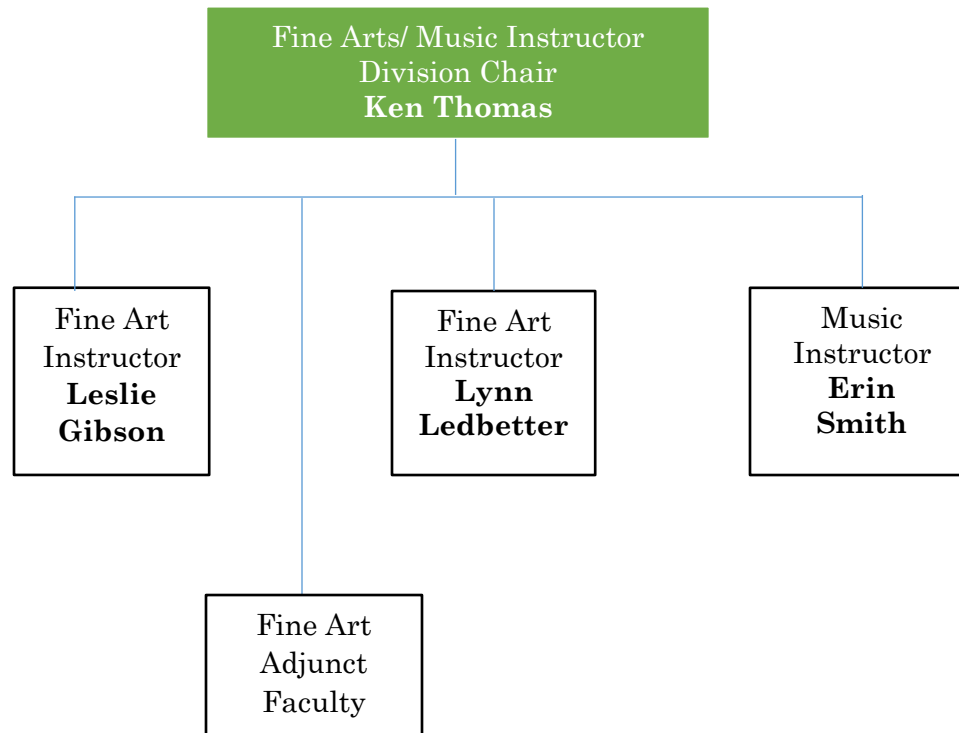
## BUS/CIS DIVISION





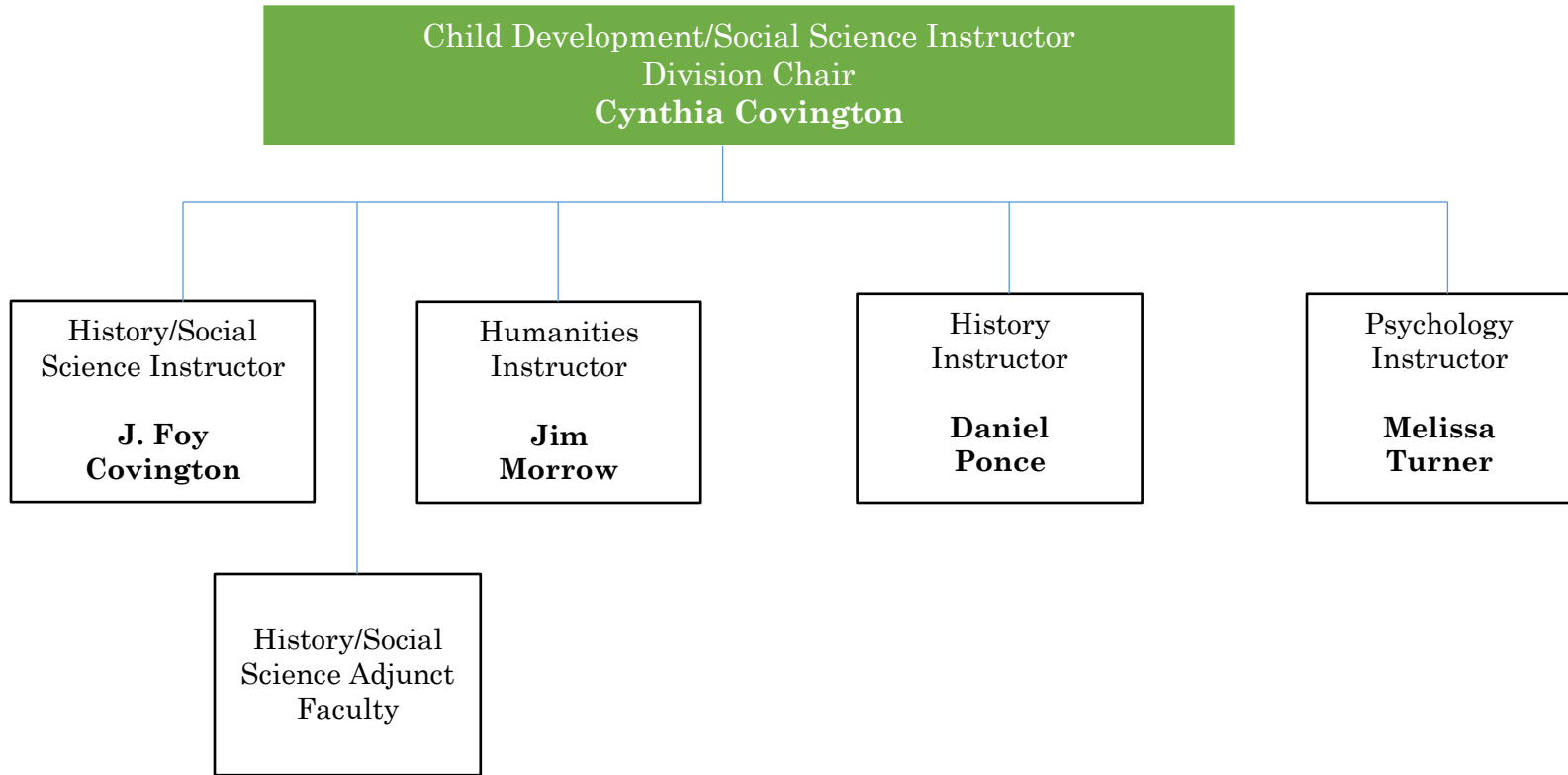
# Enterprise State Community College

## FINE ARTS DIVISION



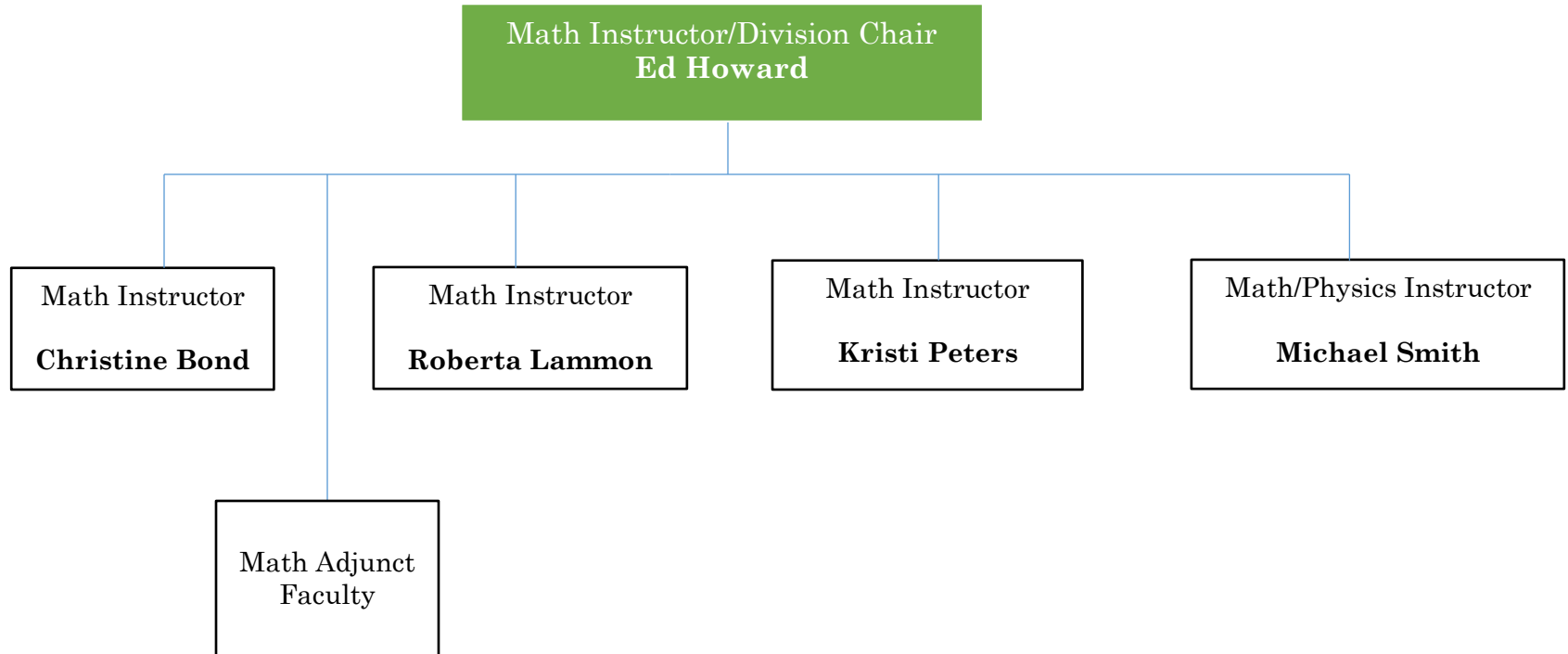
# Enterprise State Community College

## HISTORY/SOCIAL SCIENCE DIVISION



# Enterprise State Community College

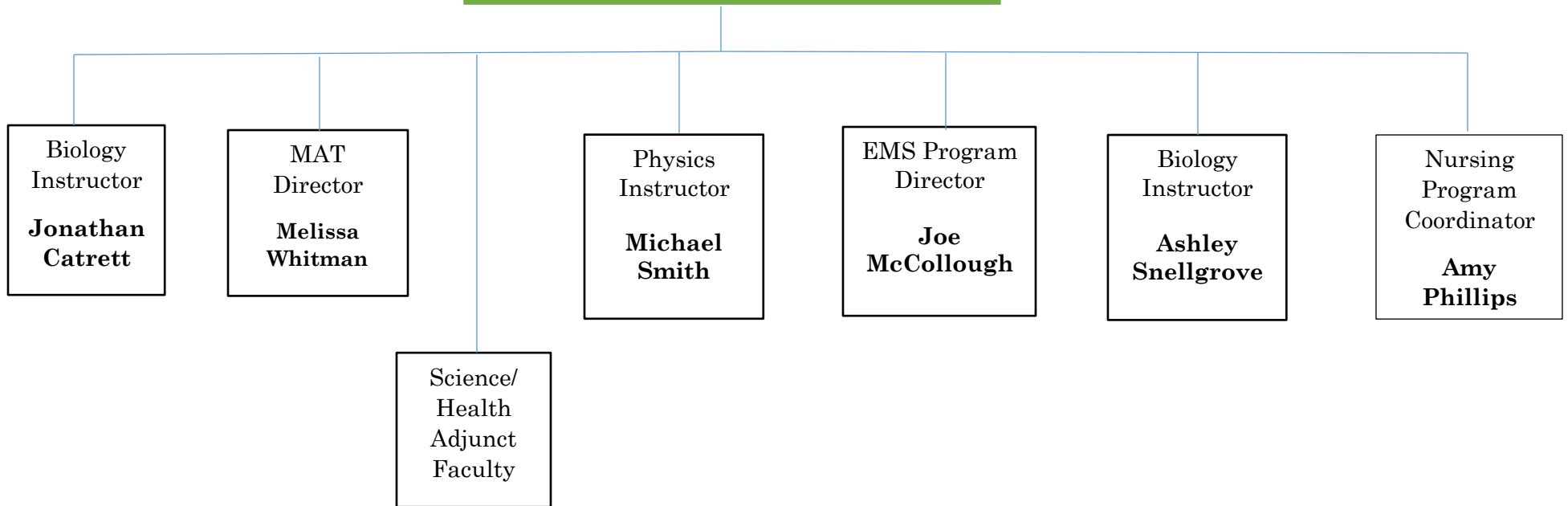
## MATH DIVISION



# Enterprise State Community College

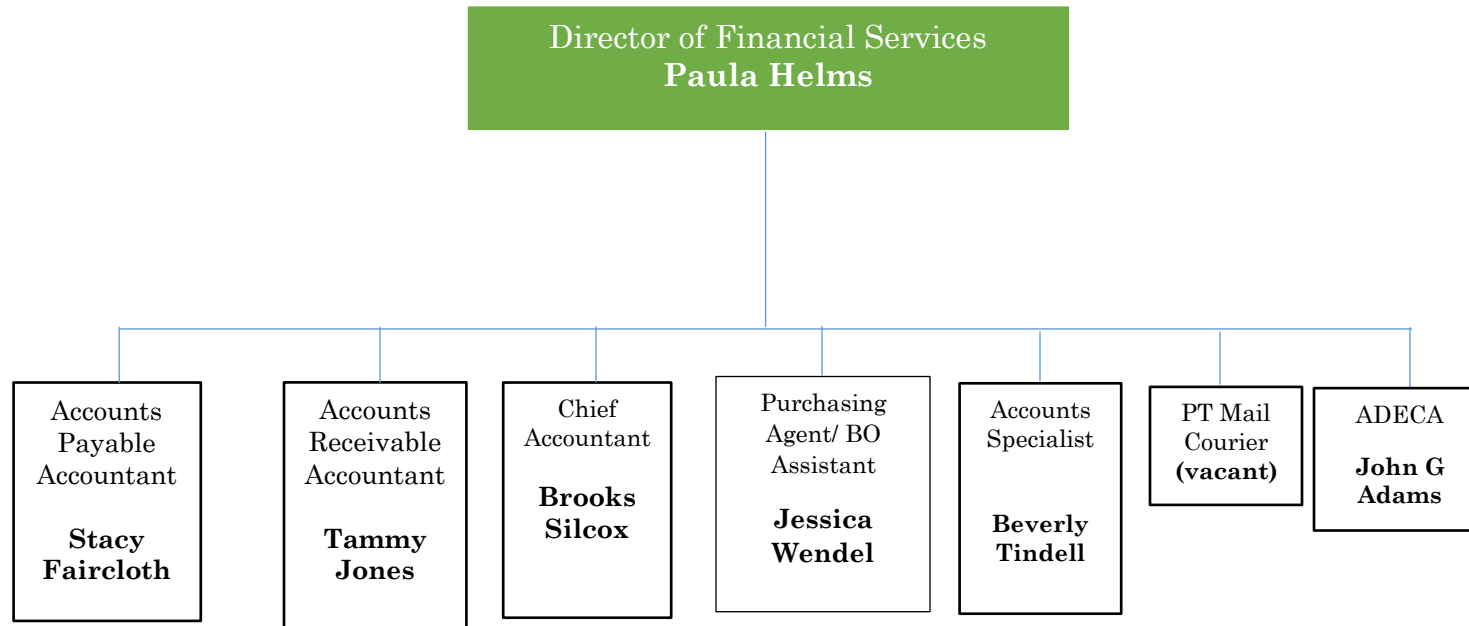
## HEALTH/SCIENCE DIVISION

Chemistry/Physical Science  
Instructor/Health/Science Division Chair  
**Jonathon Tyler Simmons**



# Enterprise State Community College

## FISCAL AND ADMINISTRATIVE SERVICES



# Enterprise State Community College

## FACILITY OPERATIONS

